



Centro de Interface  
Tecnológico Industrial

**Advancing Smart & Collaborative Manufacturing**

July 19, 2022

Sérgio Ivan Lopes

Financiado por:

**NORTE2020**  
PROGRAMA OPERACIONAL REGIONAL DO NORTE

**PORTUGAL**  
**2020**

 UNIÃO EUROPEIA  
Fundos Europeus  
Estruturais e de Investimento

# Agenda

---

- What is CiTin?
- Expected impact in the Alto Minho region
- CiTin Vs. TRL
- Specialization Domains
- Business Model
- Main Activities
- MoUs
- Team
- Recruitment

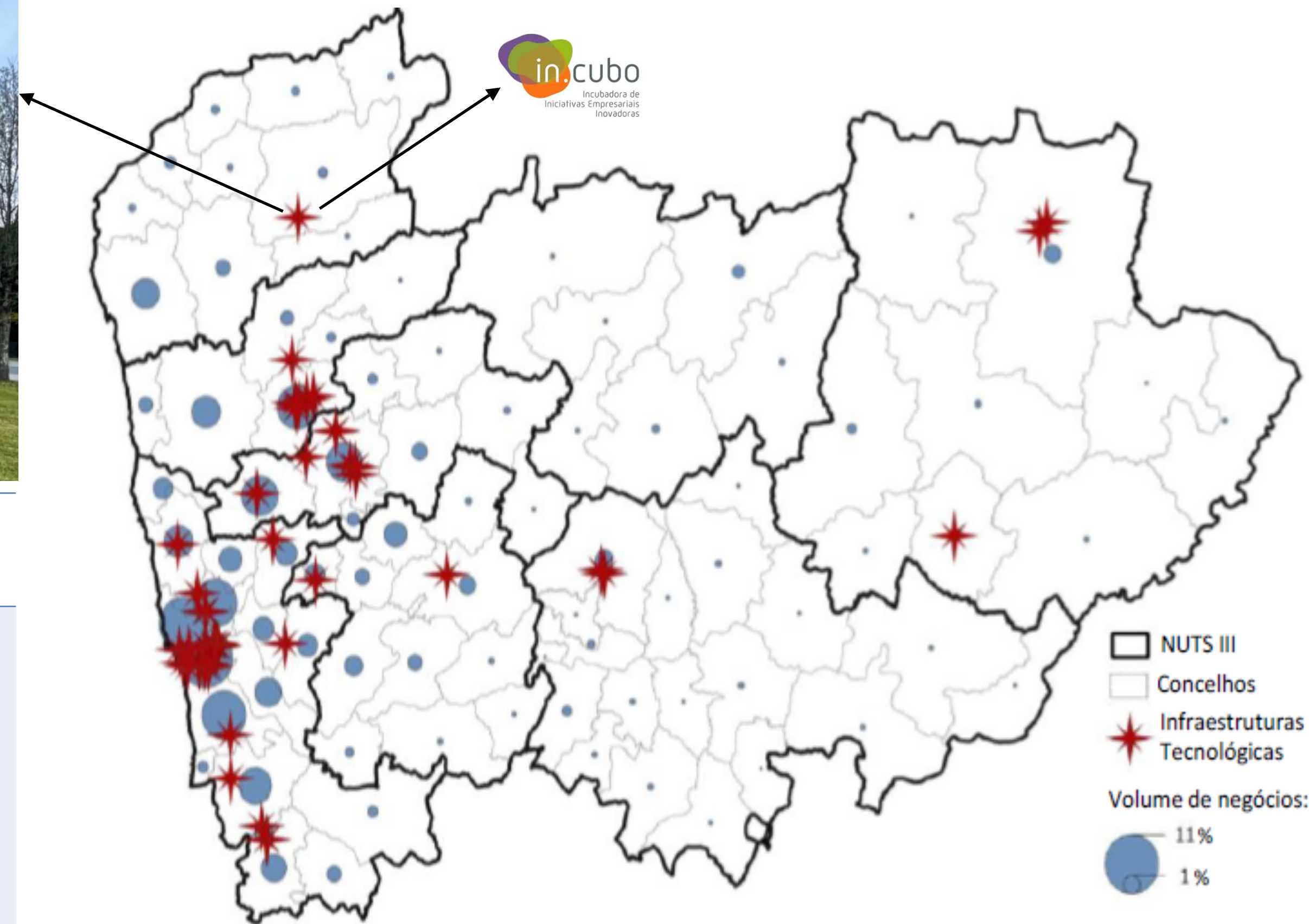
# What is CiTin?

Non-profit and private, scientific, technological and technical assistance association, that resulted from the joint action of the following founding members:

Public Institutions and Associations (5)	Industrial Companies (12)
<ul style="list-style-type: none"><li>• <b>IPVC – Instituto Politécnico de Viana do Castelo</b></li><li>• <b>Câmara Municipal dos Arcos de Valdevez</b></li><li>• <b>CIM Alto Minho</b></li><li>• <b>CEVAL – Confederação Empresarial do Alto Minho</b></li><li>• <b>In.Cubo – Incubadora de Iniciativas Empresariais Inovadoras</b></li></ul>	<ul style="list-style-type: none"><li>• <b>Antolin Lusitania</b></li><li>• <b>BMVIV</b></li><li>• <b>Coindu</b></li><li>• <b>DS SMITH</b></li><li>• <b>EMIR</b></li><li>• <b>Metaloviana</b></li><li>• <b>NM3D</b></li><li>• <b>Portas Arcuense</b></li><li>• <b>SONORGÁS</b></li><li>• <b>The Tomorrow Company</b></li><li>• <b>TINTEX</b></li><li>• <b>West Sea</b></li></ul>



# Expected impact in the Alto Minho region



## Macro

- Generation of added value in the Alto Minho region;
- Creation of highly qualified jobs;
- Increase in the intensity of exports;
- Settlement of the population in the territories;
- Attracting National Investment and Foreign Direct Investment.

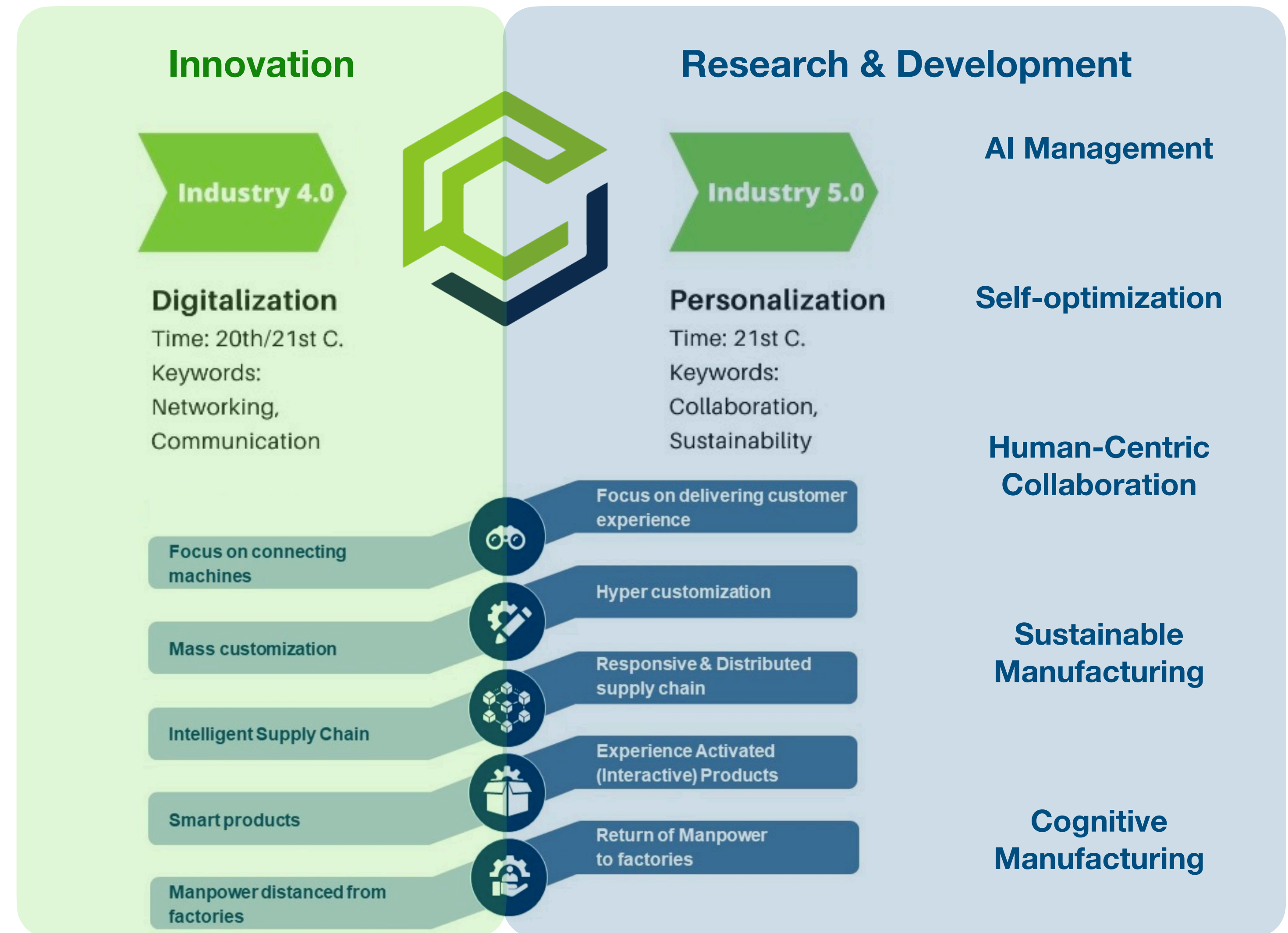
## Micro

- Intensification of cooperation between academia and industry;
- Increase in private investment in R&DT;
- Foster innovation:
- New products;
- New processes;
- New services;
- Technology-based entrepreneurship.

(2017) Mapeamento dos investimentos em infraestruturas tecnológicas. Norte 2020.

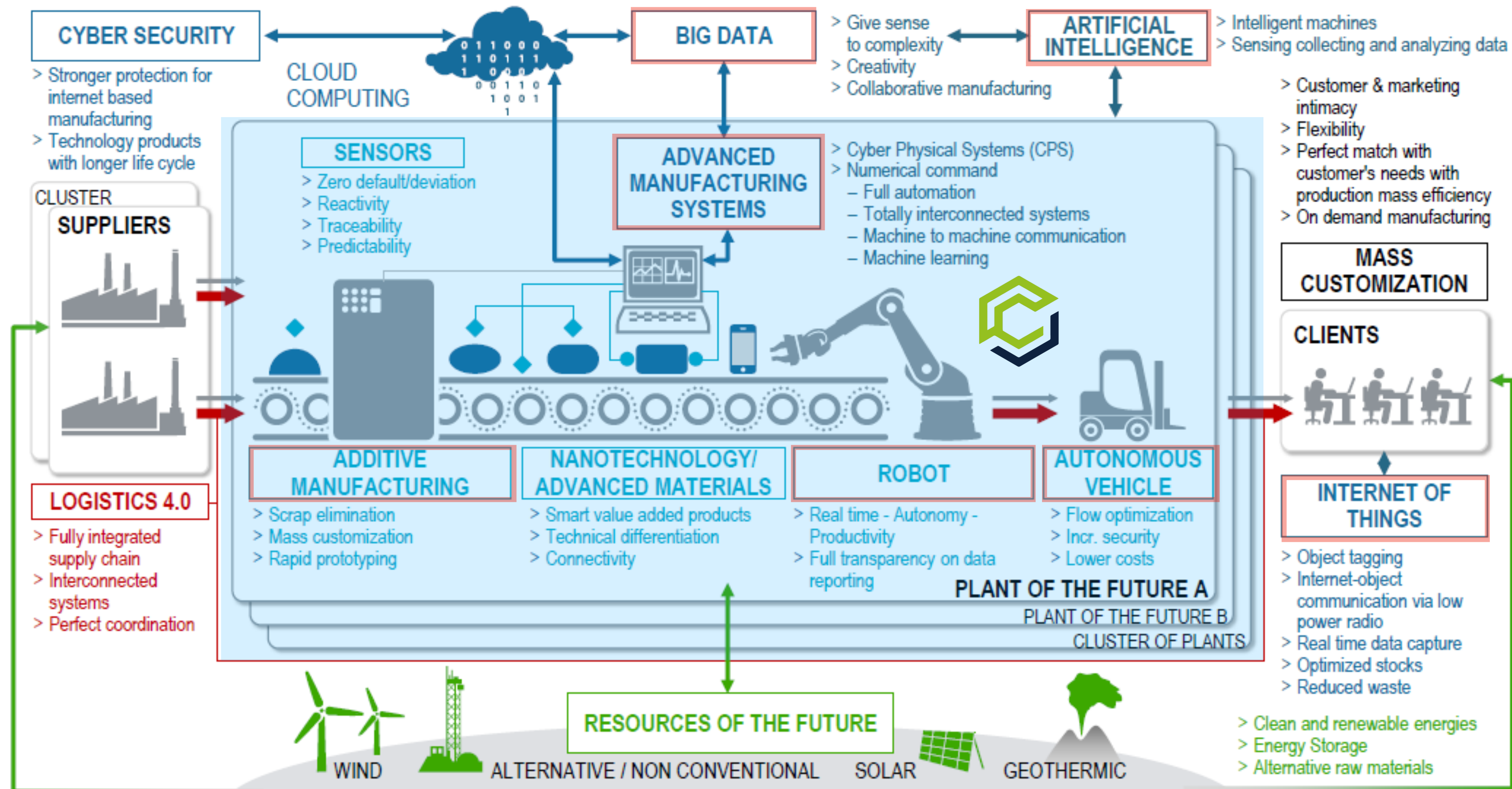


# Towards Industry 5.0





# Industry 4.0 Ecosystem



Roland Berger, 2015

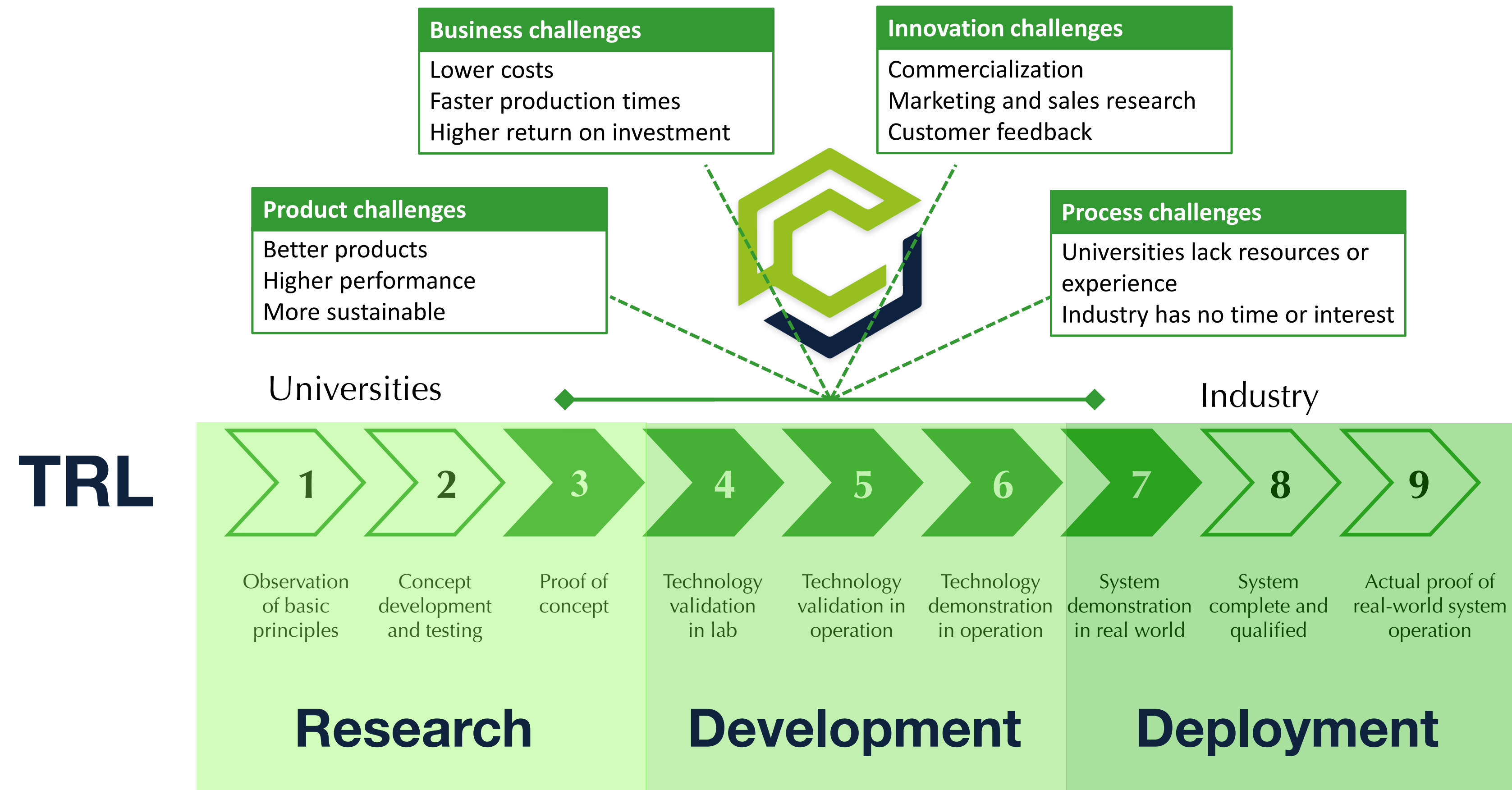
Financiado por:

**NORTE2020**  
PROGRAMA OPERACIONAL REGIONAL DO NORTE

**PORTUGAL 2020**

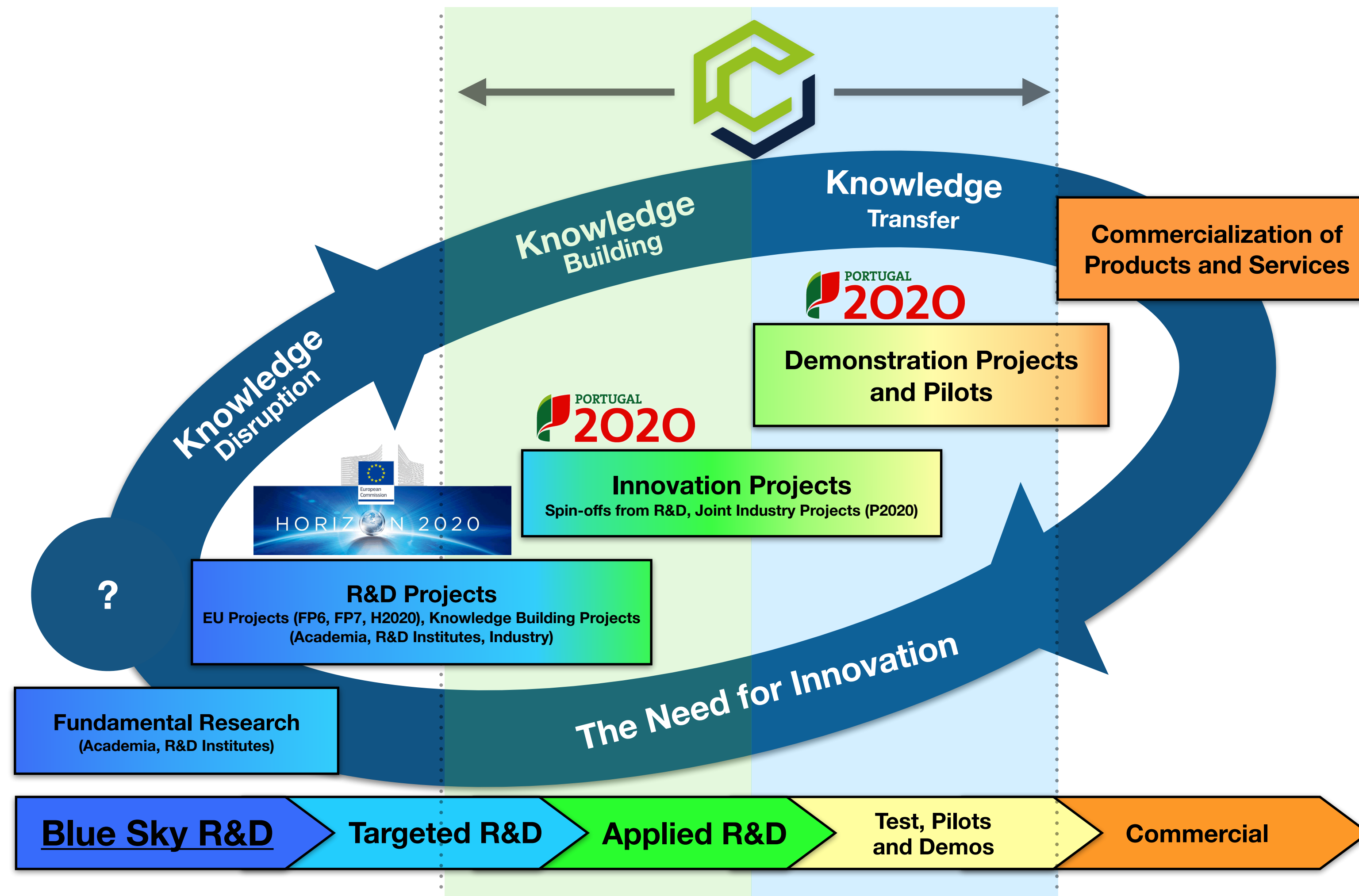
**UNIÃO EUROPEIA**  
Fundos Europeus  
Estruturais e de Investimento

# CiTin Vs. TRL





# CiTin and the Innovation Chain





# Specialization Domains

1. Advanced Production Systems	2. Cyber-Physical Systems	3. Mobility and Environment Industry
<p>1.1. Automation/Mechatronics</p> <p>1.2. Collaborative Robotics</p> <p>1.3. Human-Machine Interaction</p> <p>1.4. Flexible Manufacturing Systems</p>	<p>2.1. Industrial Information Systems</p> <p>2.2. Big Data e IIoT</p> <p>2.3. Embedded Systems</p> <p>2.4. Artificial Intelligence</p>	<p>3.1. Automotive component production</p> <p>3.2. Development of new materials</p> <p>3.3. Circular economy</p> <p>3.4. Eco innovation</p>

# CiTin - Business Model

## – Services-oriented

- Benefits offered to members in order to respond to individual member requests and queries;
- Economic activities: Consulting and Technical Assistance Services ( Services Provision )
- Non-Economic activity: R&D+Innovation Services (Competitive Projects)

## – Open Innovation

- Benefits obtained from public funding must be shared with members in a logic of open innovation;

## – Collectivism

- Actions that CiTin takes on behalf of the majority of its members' interests;;



# CiTin - Main Activities



## Main Activities

### Technological Intelligence

Information  
Services  
(Funding opportunities,  
etc)

Intellectual/  
Industrial Property  
Support Service

### Technical-Scientific

Institutional  
Cooperation  
Service  
(Technological Cooperation)

Technology  
Transfer  
Service

R&D  
Services

Technology  
and Innovation  
Services

Diagnostic and  
Consulting  
Services

Rapid  
Prototyping  
Services

### Formação

Specialized Technical Training  
Services

Postgraduate and  
Masters

PhDs



UNIVERSIDADE DA CORUÑA



UNIVERSIDADE  
DE VIGO





# New Associates

Confirmed:



Under Analysis:



# Team

8  
1 Lic  
3 Phd  
4 MSc

Cristiano de Jesus  
PhD Sistemas de Produção

Hugo Silva  
PhD Eng.<sup>a</sup> Mecânica

André Pinto  
MSc Eng.<sup>a</sup> Mecatrónica

Hugo Jesus  
MSc Eng.<sup>a</sup> Mecatrónica

Advanced  
Production  
Systems

Elsa Castro  
Lic. Contabilidade

Cyber-Physical  
Systems

Sérgio Ivan Lopes  
PhD Eng.<sup>a</sup> Eletrotécnica

Rolando Azevedo  
MSc Eng.<sup>a</sup> Informática

Eduardo Pontes  
MSc Eng.<sup>a</sup> Biomédica.



# Recruitment



> [www.citin.pt](http://www.citin.pt)



Centro de Interface  
Tecnológico Industrial

In.Cubo | Passos, 4970-786 | Arcos de Valdevez

[citin.pt](http://citin.pt)



Financiado por:

**NORTE2020**  
PROGRAMA OPERACIONAL REGIONAL DO NORTE

**PORTUGAL**  
**2020**

 UNIÃO EUROPEIA  
Fundos Europeus  
Estruturais e de Investimento